



Bergische Universität Wuppertal

Fachbereich Mathematik und Naturwissenschaften

Institute of Mathematical Modelling, Analysis and Computational  
Mathematics (IMACM)

Preprint BUW-IMACM 20/33

Kathrin Klamroth, Bruno Lang, Armin Seyfried, and Michael Stiglmayr

## **Network Simulation for Pedestrian Flows With HyDEFS**

September 4, 2020

<http://www.math.uni-wuppertal.de>

# Network Simulation for Pedestrian Flows With HyDEFS

Kathrin Klamroth<sup>1</sup> · Bruno Lang<sup>1</sup> · Armin Seyfried<sup>2,3</sup> · Michael Stiglmayr<sup>1</sup>

<sup>1</sup> IMACM, School of Mathematics and Natural Sciences, University of Wuppertal, 42097 Wuppertal, Germany

E-mail: [klamroth@math.uni-wuppertal.de](mailto:klamroth@math.uni-wuppertal.de), [lang@math.uni-wuppertal.de](mailto:lang@math.uni-wuppertal.de), [stiglmayr@math.uni-wuppertal.de](mailto:stiglmayr@math.uni-wuppertal.de)

<sup>2</sup> Faculty of Architecture and Civil Engineering, University of Wuppertal, 42097 Wuppertal, Germany

<sup>3</sup> Institute for Advanced Simulation, Forschungszentrum Jülich, 52425 Jülich

E-mail: [a.seyfried@fz-juelich.de](mailto:a.seyfried@fz-juelich.de)

Received: – / Last revision received: – / Accepted: –

DOI: --

**Abstract** The reliable simulation of pedestrian movement is an essential tool for the security aware design and analysis of buildings and infrastructure. We developed HyDEFS, an event-driven dynamic flow simulation software which is designed to simulate pedestrian movement depending on varying routing decisions of the individual users and varying constraints. HyDEFS uses given density depending velocities to model congestions and evaluates flow distributions with respect to average and maximum travel time. This is of particular importance when considering evacuation scenarios. We apply HyDEFS on two small networks and cross validate its results by time-discrete and time-continuous calculations.

**Keywords** pedestrians · event-driven simulation software · varying routing · macroscopic

## 1 Introduction

Modelling and simulation of pedestrian flows are often applied to the design of traffic infrastructures or the evaluation of rescue routes [1–3]. The goal of the investigations is to avoid long lasting congestions or to minimize evacuation times of a building. In order to consider individual pedestrian characteristics such as free walking speed, size, reaction times, etc. mostly agent based models are used. These models calculate locations and speed of individual pedestrians and their interaction with the environment rule-based or using coupled ordinary differential equations [4].

1 With respect to route selections these models and simulations use simplifying assump-  
2 tions. For example, that all pedestrians choose the shortest path [5] or the fastest route  
3 [6]. When choosing a route along the shortest path, it is implicitly assumed that all pedes-  
4 trians have complete knowledge of the possible routes. In real systems, however, this  
5 knowledge depends on the users of the building. While in schools and office buildings it  
6 can be assumed that the users are familiar with the infrastructure, in subway stations or  
7 railway stations, however, this is not necessarily the case. The simplification is also sig-  
8 nificant when assuming that pedestrians choose the fastest route, since knowledge about  
9 the occupancy level would only be given if all routes can be viewed by the pedestrian.

10 For a more realistic modelling of route selection and knowledge about building struc-  
11 tures, first approaches exist which, for example, consider the perception of congestion  
12 in front of doors for a rerouting [7], introduce different knowledge levels and uncertain-  
13 ties about distances [8, 9], modelling the influence of signage [10–12] or incorporating  
14 knowledge about the building by modelling cognitive maps, landmarks or generalised  
15 knowledge [13]. Although this progress has been achieved, in practice analyses are lim-  
16 ited to a few explicit route selection scenarios. For time and cost reasons, it is impossible  
17 to consider all possible factors.

18 The discussion in the previous paragraph considers the system from the pedestrian’s  
19 point of view. However, this process can also be seen as the flow of people on a network  
20 of paths (e.g. escape routes from a building).

21 For the modelling of flows on networks there are mathematically, physically and engi-  
22 neeringly motivated approaches. Since pedestrians could be considered as directed flows  
23 of self-driven particles, the approaches to describe flows on networks for Internet or ve-  
24 hicular traffic are similar. In mathematics mostly PDEs are used to describe the dynamics  
25 on the edges [14–17], in physics and engineering microscopic or agent-based models are  
26 used [18–26]. In order to model flows at junctions and crossings of a network, the mathe-  
27 matical models introduced in [14, 15] rely on assumptions for the distribution of the flows.  
28 However, empirical data for the distribution are rare [27, 28] and could depend on vari-  
29 ous factors including properties of the network or its infrastructure, like signage or traffic  
30 lights. By using agent-based models, individual route decisions can be taken into account,  
31 depending on, besides others, knowledge about shortest paths and psychological factors  
32 such as keeping away from walls or following others [18]. For networks of escape routes  
33 in buildings the simulations in [7, 13] show how different assumptions for the strategy of  
34 route choices influence the evacuation time. To consider larger networks, discrete formu-  
35 lations of PDE models are also used for pedestrians [19]. In networks for vehicle traffic,  
36 the effects of route decisions on vehicle traffic (traffic lights and traffic jams) [20, 21] or  
37 network properties such as the betweenness [22, 23] were investigated. But also here the  
38 models are based on assumptions how the decisions are made.

39 Considering the complexity of the system already small networks for driven particles  
40 show complex phenomena such as the improvement of the evacuation time by reducing  
41 the flow at doors [24] or the increase of travel times by introducing an additional route  
42 option outlined by the Braess paradox [29, 30]. Recent work on the Braess paradox reveals  
43 a complex structure of the phase diagram and its dependence on the length ratios of the  
44 routes [25] or on assumptions about the route choice of the users [26].

1 The work presented in [25, 26] already studied all possible distributions of flows on  
 2 a network by using a microscopic model and analysing the phase space by a fine dis-  
 3 cretization. It precisely maps the dynamics of the flows on the network but requires a  
 4 high computing effort.

5 The discussion shows that a realistic evaluation of small networks is already difficult  
 6 and requires that the models and simulations take into account a high variability of the  
 7 user’s route decisions.

8 To be able to consider all possible distributions of flows and to parametrize properties of  
 9 the network or its infrastructure we aim to introduce a simpler approach. First a simulation  
 10 software HyDEFS based on an event-driven dynamics is introduced. Simulation results  
 11 of a simple scenario are presented and then these are verified against analytic results for  
 12 a continuous, as well as a discrete, flow model of the same scenario. Finally, a more  
 13 complex scenario is studied with the new method.

14 The approach presented in this article is aimed at allowing to investigate such multi-  
 15 parameter variability also in larger networks. This is also the basis for a future analytic  
 16 description of the system in order to optimize or to increase the robustness of the network  
 17 with respect to variations of the distribution of the flows.

## 18 2 The HyDEFS software

19 The experiments in this work have been done with the HyDEFS (**H**ybrid **D**ensity-depend-  
 20 ent **E**vent-driven **F**low **S**imulation) package developed by the authors. The purpose of  
 21 this software is the simulation of pedestrian flows under varying routing decisions or side  
 22 constraints. The software allows the simulation of “groups” of persons moving within a  
 23 network, where the velocity depends on the density, i.e., on the number of persons that  
 24 are currently on the same edge.

25 We consider a network  $G = (V, E)$  with  $n$  nodes and  $m$  (directed) edges  $e = (v, w)$ ,  
 26 allowing to move from node  $v$  to node  $w$ . Groups of persons may enter the network at  
 27 some of the nodes,  $v \in V_{\text{in}} \subset V$ , and leave it at some other nodes,  $v \in V_{\text{out}} \subset V$ .

28 In our approach, an event  $\varepsilon = (t_{\text{arr}}, q_{\text{arr}}, v_{\text{cur}}, e_{\text{in}})$  represents a group of  $q_{\text{arr}} > 0$  persons  
 29 arriving at time  $t_{\text{arr}}$  at a node  $v_{\text{cur}}$ , coming from one of  $v_{\text{cur}}$ ’s incoming edges,  $e_{\text{in}}$ . In  
 30 particular, the persons entering the network are the events known at the beginning of the  
 31 simulation,  $\varepsilon_{\text{in}} = (t_{\text{in}}, q_{\text{in}}, v_{\text{in}}, 0)$ , where 0 stands for “not coming from an edge.” Through-  
 32 out the simulation, the currently known event points are kept in an *event point schedule*  
 33  $\mathcal{E}$ , which is organized as a priority queue w.r.t. the events’ time component.

If an event point  $\varepsilon = (t_{\text{arr}}, q_{\text{arr}}, v_{\text{cur}}, e_{\text{in}})$  corresponds to a group arriving at a “terminal”  
 node  $v_{\text{cur}} \in V_{\text{out}}$  and thus leaving the network, then this fact is recorded for the final  
 statistics on, among others, average and maximum time of leaving. Otherwise, the group  
 is distributed over the edges  $e_{\text{out}}$  starting at node  $v_{\text{cur}}$ . To this end, each edge of the  
 network has been assigned a probability  $\text{prob}(e)$ , such that

$$\sum_{e_{\text{out}}=(v,w) \in E} \text{prob}(e_{\text{out}}) = 1 \quad \text{for all } v \in V \setminus V_{\text{out}},$$

```

set load( $e$ ) = 0 for all  $e \in E$       { current load (number of persons) on the edge }
starting with  $\mathcal{E} = \emptyset$ , insert all  $(t_{in}, q_{in}, v_{in}, 0)$  corresponding to groups entering the network
while  $\mathcal{E} \neq \emptyset$ 
  extract a  $t$ -minimal event point  $\varepsilon = (t_{arr}, q_{arr}, v_{cur}, e_{in})$  from  $\mathcal{E}$ 
  reduce load( $e_{in}$ ) by  $q_{arr}$       { remove group from incoming edge, only if  $e_{in} \neq 0$  }
  if  $v_{cur} \in V_{out}$ 
    record that  $q_{arr}$  persons have left the network at time  $t_{arr}$ 
  else      { distribute the group over the edges starting at node  $v_{cur}$  }
    for all outgoing edges  $e_{out} = (v_{cur}, v_{next})$  such that  $\text{prob}(e_{out}) > 0$ 
       $q_{out} = q_{arr} \cdot \text{prob}(e_{out})$ 
      increase load( $e_{out}$ ) by  $q_{out}$ 
       $t_{next} = t_{arr} + \text{len}(e_{out})/v_{out}$ , where  $v_{out} = f_{e_{out}}(\rho(e_{out}))$  is the current velocity
        corresponding to density  $\rho(e_{out}) = \text{load}(e_{out})/\text{len}(e_{out})$  on the edge
      insert  $(t_{next}, q_{out}, v_{next}, e_{out})$  into  $\mathcal{E}$ 

```

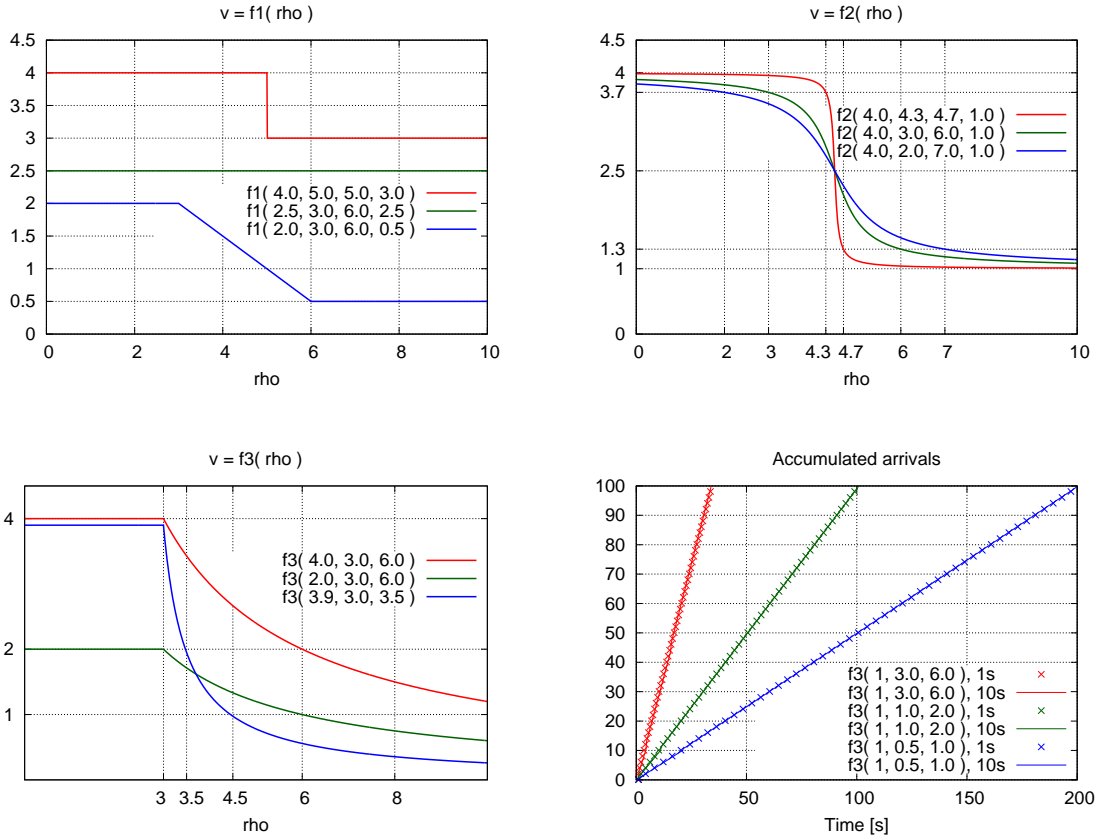
**Figure 1** Density-dependent, event point-based movement of groups in HyDEFS.

1 and a portion  $\text{prob}(e_{out}) \cdot q_{arr}$  of the group is sent over edge  $e_{out}$ . It progresses with a veloc-  
 2 ity that depends on the (new) density  $\rho_{out}$  on the edge, that is, on the “load” of the edge (the  
 3 number of persons currently moving on it),  $\text{load}(e_{out})$ , and on its length,  $\text{len}(e_{out})$ . More  
 4 precisely, the velocity is given by  $v_{out} = f_{e_{out}}(\rho_{out})$ , where  $\rho_{out} = \text{load}(e_{out})/\text{len}(e_{out})$ , and  
 5  $f_{e_{out}}$  is a function that can be prescribed for each edge; see below.

6 The core of the simulation is summarized in Fig. 1. Note that the term “group of  
 7 persons” is to be understood in a wider sense,  $q$  taking non-integer values in general. Also,  
 8 subdividing the groups at each node increases the number of event points, but it allows  
 9 tracing all possible paths and their probabilities with a single simulation, thus obviating  
 10 the need for a sampling process over single instances, as done in many item-tracking  
 11 approaches.

12 Currently, HyDEFS supports the following three types of velocity functions; cf. Fig. 2.

- 13 • The piecewise linear function  $v(\rho) = f_1(v_{max}, \rho_1, \rho_2, v_{min}; \rho)$  is defined by two lim-  
 14 iting velocities,  $v_{max}$  and  $v_{min}$ , and two thresholds for the density,  $\rho_1$  and  $\rho_2$ . If the  
 15 current density on the edge is small,  $\rho \leq \rho_1$ , then the group can move fast,  $v = v_{max}$ ,  
 16 whereas high density ( $\rho > \rho_2$ ) leads to slow movement,  $v = v_{min}$ . For  $\rho_1 < \rho \leq \rho_2$ ,  
 17 the velocity  $v$  drops linearly from  $v_{max}$  to  $v_{min}$ . Note that this includes density-  
 18 independent velocities ( $v_{max} = v_{min}$ ), as well as step functions ( $\rho_1 = \rho_2$ ).
- 19 •  $f_2(v_{min}, \rho_1, \rho_2, v_{max}; \rho)$  is a “smooth” version of  $f_1$  with  $v_{max}$  and  $v_{min}$  denoting  
 20 the asymptotic limits and  $\rho_1$  and  $\rho_2$  indicating where 10 and 90%, resp., of the  
 21 difference  $v_{max} - v_{min}$  are reached.
- 22 •  $f_3(v_{max}, \rho_1, \rho_2; \rho)$  describes a velocity that is inversely proportional to the density,  
 23 with constant value  $v_{max}$  for  $\rho \leq \rho_1$  and dropping to  $v_{max}/2$  at  $\rho_2$ .



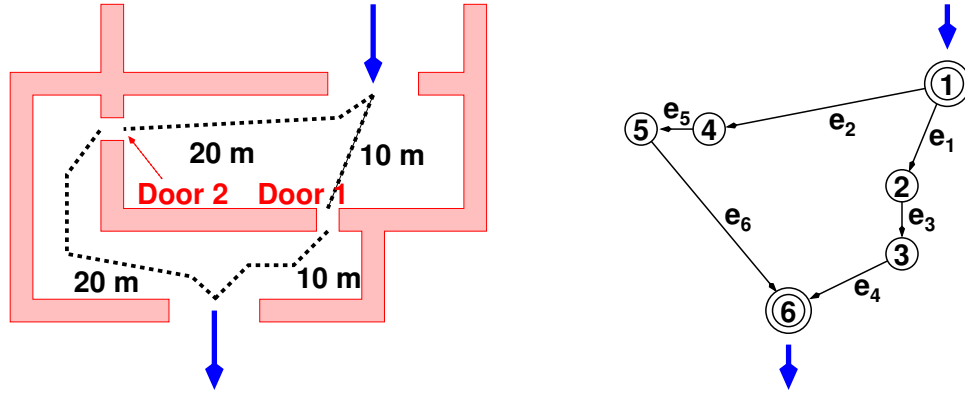
**Figure 2** Functions for the density-dependent velocity (top left:  $f_1$ ; top right:  $f_2$ ; bottom left:  $f_3$ ) for different settings of the parameters. The bottom right picture shows the “throughput” of a length-1 edge with velocity function  $f_3(1, w, 2w)$  for different values of  $w$ . Here, 100 persons are traversing the edge in 1000 “groups” of 0.1 persons, and they are arriving at the start point within 1 second (with 1ms between two groups; crosses) or within 10s (intervals 10ms; solid lines).

1 Note that a length-1 edge with velocity  $f_3(1, c, 2 \cdot c)$  roughly corresponds to a con-  
 2 striction allowing  $c$  persons per second to pass, almost independently from the num-  
 3 ber of persons waiting before the constriction; cf. bottom right picture in Fig. 2.

4 HyDEFS also includes components for pre- and postprocessing. In particular, the de-  
 5 scription of the network may contain parameters that can be varied automatically between  
 6 subsequent runs of the simulation. This feature is used heavily in the following sections.

### 7 3 A simple scenario

8 We consider a very simple evacuation scenario in a continuous setting. We assume that,  
 9 over a time interval  $[0, T]$ , a constant flow of  $N$  persons in total ( $N/T$  persons per second)  
 10 arrives at a given point. They have to traverse a room and leave it by one of two doors,  
 11 which are at a distance of 10 meters and 20 m from the point of arrival. Having passed



**Figure 3** Sketch of the simple scenario (left) and corresponding network model (right).

1 the door, the exit point is reached by another corridor (10 m from door 1, 20 m from  
 2 door 2); cf. the sketch in Fig. 3. We assume that, except for the two doors, the corridors  
 3 are wide enough and there are no obstacles on the way, so that the persons can move with  
 4 a constant velocity of 1 m/s. For the doors we assume a restricted capacity, allowing  $c_1$   
 5 and  $c_2$  persons to pass per second, respectively.

6 This is modelled by the network also shown in Fig. 3, with  $V_{\text{in}} = \{1\}$  and  $V_{\text{out}} = \{6\}$ ,  
 7 and  $e_3$  and  $e_5$  representing the doors. According to the above assumptions, the remaining  
 8 edges  $e_1$ ,  $e_2$ ,  $e_4$ , and  $e_6$  have lengths 10, 20, 10, and 20, resp., and they all have the same  
 9 (constant) velocity function  $f_1(1, 1, 1, 1; \rho) \equiv 1$ . By contrast,  $e_3$  and  $e_5$  have length 1  
 10 and the velocity functions  $f_3(1, c_k, 2 \cdot c_k; \rho)$ . The constant incoming flow is replaced with  
 11 discrete events, representing groups of size  $q_{\text{in}}$  arriving at node 1. In this model, the flow  
 12 can split only at node 1, and we assume that a portion of  $\text{prob}(e_1) \in [0, 1]$  follows the  
 13 outgoing edge  $e_1$  (heading for door 1), leaving  $\text{prob}(e_2) = 1 - \text{prob}(e_1)$  for the way to  
 14 door 2.

15 In the following we report results for this scenario. We first discuss numerical experi-  
 16 ments with the HyDEFS software in Sec. 3.1. For the simple scenario these results also  
 17 can be derived analytically. In Sec. 3.2 we do this with the continuous model, assuming  
 18 a constant flow entering the network. In Sec. 3.3 a discrete, group-based model is used  
 19 instead. We observe that the continuous and the discrete model behave rather similarly  
 20 for this scenario and that the HyDEFS results agree well with both.

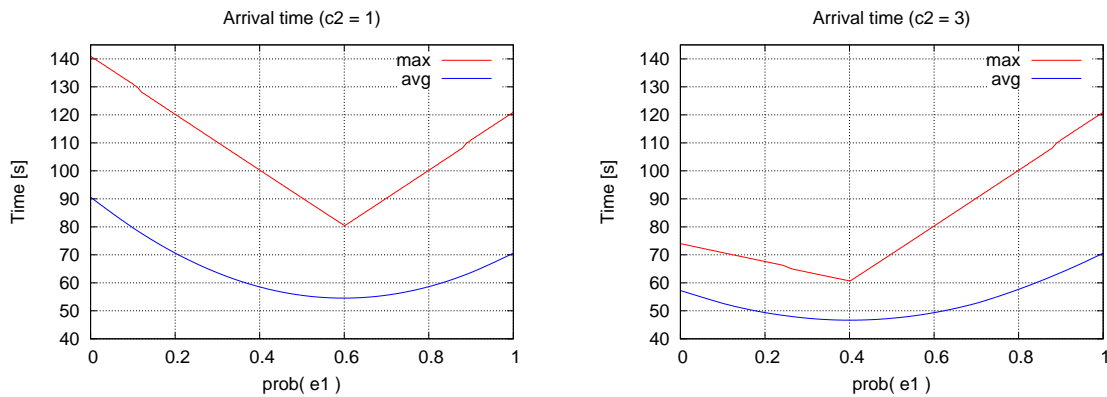
### 21 3.1 Results from simulations with HyDEFS

22 In all experiments shown in this work, we use  $T = 10$  s,  $N = 100$ ,  $q_{\text{in}} = 0.1$ , i.e., the  
 23 constant flow is replaced with  $n = 1000$  groups entering the network at times 0, 0.01, ...,  
 24 9.99 s, and we fix  $c_1 = 1$ .

25 Since the number of persons arriving per second at node 1 substantially exceeds the  
 26 capacity of each door, it is clear that both doors should be used even if the way via door 2  
 27 is much longer, because the waiting time at door 1 is thus reduced. The simulation results  
 28 confirm this expectation, indicating that roughly 40% of the persons should use door 2 in

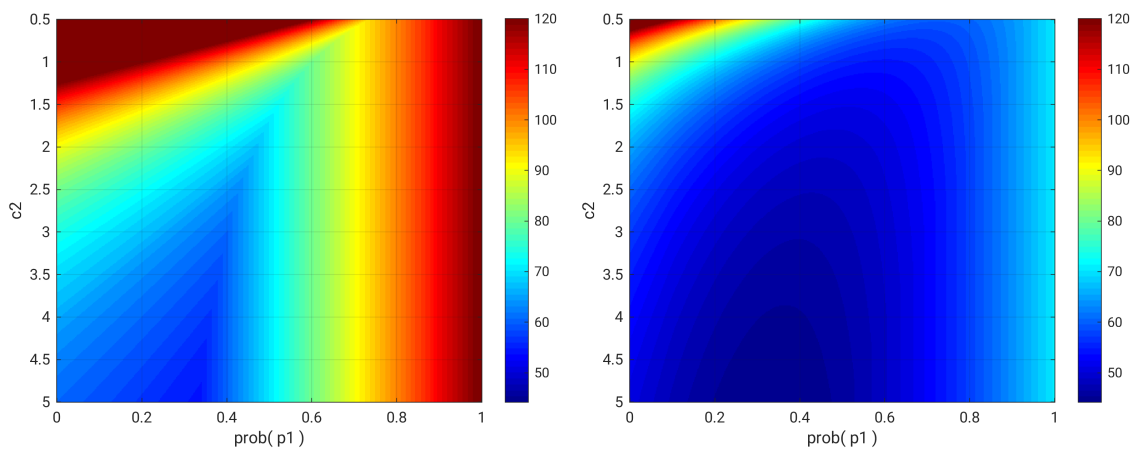


1 order to minimize the maximum and average arrival time at node 6, if both doors have  
 2 the same capacity  $c_2 = c_1 = 1$ ; cf. left picture in Fig. 4. We also expect that more persons  
 3 should be sent to door 2 if the latter's capacity is larger, and again this is confirmed by  
 4 a simulation with  $c_2 = 3$ ; cf. right picture in Fig. 4. Indeed, increasing the capacity of  
 5 door 2 reduces the optimal maximum and average arrival times, as one might hope.



**Figure 4** Maximum and average arrival times for the simple scenario depending on the distribution of the flow to edges  $e_1$  and  $e_2$  for two different capacities of door 2,  $c_2 = 1$  (left) and  $c_2 = 3$  (right).

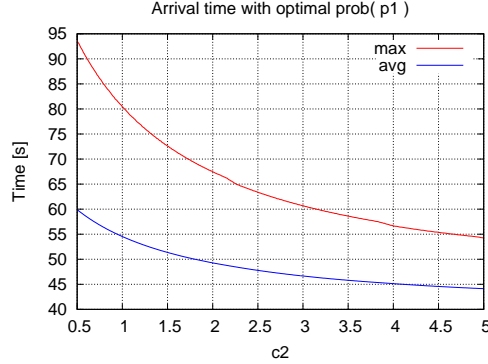
6 The simulation can also be used to optimize the design of the network. Figure 5 shows  
 7 the maximum and average arrival times if the capacity of door 2 is varied as well. Note  
 8 that the plots from Fig. 4 correspond to the horizontal lines  $c_2 = 1$  and  $c_2 = 3$  in these  
 9 images.



**Figure 5** Maximum (left) and average (right) arrival times for the simple scenario depending on the capacity of door 2 and the distribution of the flow to edges  $e_1$  and  $e_2$ . The ranges (up to 240.59 for max, 140.47 for avg) have been cut to improve the display of smaller values.

10 Going one step further, we can determine how much capacity we must provide for  
 11 door 2 in order to achieve a desired reduction in the maximum or average arrival time; cf.  
 12 Fig. 6.





**Figure 6** Best maximum and average arrival times that can be achieved with a given capacity for door 2, assuming that  $\text{prob}(e_1)$  is chosen optimally in each case.

### 3.2 Analysis for the continuous model

Due to the simplicity of the scenario, the above results can also be obtained analytically. In the continuous setting, with  $N$  persons entering the network during the time interval  $[0, T]$ , let  $p_k$  be the portion of the overall flow passing through door  $k$  ( $p_2 = 1 - p_1$ ), and let  $t_k^{\text{arr}}(t)$  denote the time when a flow unit leaves the network if it had entered it at time  $t \in [0, T]$  and taken door  $k$ ,  $k = 1, 2$ . Then

$$t_k^{\text{arr}}(t) = t + \text{len}_k + \text{delay}_k(t),$$

- where the three summands represent, respectively, the start of motion, the time for unhindered motion with maximum speed  $v \equiv 1$  along path  $k$  (i.e.,  $\text{len}_1 = 10 + 1 + 10 = 21$ ,  $\text{len}_2 = 20 + 1 + 20 = 41$ ), and a potential delay at door  $k$ . If the door's capacity can accommodate the arriving flow,

$$p_k \frac{N}{T} \leq c_k \iff p_k \leq \frac{c_k T}{N},$$

then there is no delay:  $\text{delay}_k(t) = 0$ . Otherwise,  $t \cdot p_k \frac{N}{T}$  units of flow have arrived at the door "before me," and  $t \cdot c_k$  of these have already passed, such that "I" am delayed by

$$\text{delay}_k(t) = \left( t p_k \frac{N}{T} - t c_k \right) \frac{1}{c_k} = t \left( \frac{p_k}{c_k} \cdot \frac{N}{T} - 1 \right).$$

Taking both cases together, we obtain

$$t_k^{\text{arr}}(t) = \text{len}_k + t \max \left\{ \frac{p_k}{c_k} \cdot \frac{N}{T}, 1 \right\}, \quad (1)$$

and in particular the latest arrival from path  $k$  is at time

$$t_k^{\text{max}} = \max_{t \in [0, T]} t_k^{\text{arr}}(t) = t_k^{\text{arr}}(T) = \text{len}_k + \max \left\{ \frac{p_k N}{c_k}, T \right\},$$

yielding the overall latest arrival time

$$\begin{aligned} t^{\max} &= \max\{t_1^{\max}, t_2^{\max}\} \\ &= \max\left\{\text{len}_1 + \frac{p_1 N}{c_1}, \text{len}_1 + T, \text{len}_2 + \frac{(1-p_1)N}{c_2}, \text{len}_2 + T\right\}. \end{aligned}$$

In our setting ( $N = 100$ ,  $T = 10$ ,  $\text{len}_1 = 21$ ,  $\text{len}_2 = 41$ ,  $c_1 = 1$ ,  $c_2 \in [0.5, 5]$ ), the second term  $\text{len}_1 + T = 31$  cannot contribute to the max because the fourth one,  $\text{len}_2 + T = 51$ , is larger. In fact, the latter can also be dropped, because if it is larger than the first one,  $\text{len}_2 + T > \text{len}_1 + \frac{p_1 N}{c_1}$ , then  $p_1 < (\text{len}_2 - \text{len}_1 + T) \frac{c_1}{N} = 0.3$ , and in this case  $\text{len}_2 + \frac{(1-p_1)N}{c_2} > \text{len}_2 + \frac{0.7N}{5} = 55$ , i.e., the third term is even larger. As the first (third) term is strictly monotonically increasing (decreasing) w.r.t.  $p_1$ ,  $t^{\max}$  is minimized if

$$\text{len}_1 + \frac{p_1^* N}{c_1} = \text{len}_2 + \frac{(1-p_1^*)N}{c_2} \iff p_1^* = \frac{c_1}{N} \cdot \frac{N + (\text{len}_2 - \text{len}_1)c_2}{c_1 + c_2}. \quad (2)$$

- 1 In particular, with  $N = 100$ ,  $\text{len}_2 - \text{len}_1 = 20$  and  $c_1 = 1$  fixed, for  $c_2 = 1$  the optimum
- 2 distribution is given by  $p_1^* = 0.6$  with  $t^{\max} = 81$ , whereas for  $c_2 = 3$  the optimum value
- 3  $t^{\max} = 61$  is achieved with  $p_1^* = 0.4$ . Both agree very well with the simulation results in
- 4 Fig. 4, as does the dependency ‘‘optimum  $p_1$  vs.  $c_2$ ’’ in comparison with the left picture in
- 5 Fig. 5.

For the average arrival time

$$t^{\text{avg}} = \frac{1}{T} \int_0^T p_1 t_1^{\text{arr}}(t) + (1-p_1) t_2^{\text{arr}}(t) dt$$

we use Eq. 1 to obtain

$$t^{\text{avg}} = p_1 \left( \text{len}_1 + \frac{T}{2} \max\left\{\frac{p_1}{c_1} \cdot \frac{N}{T}, 1\right\} \right) + (1-p_1) \left( \text{len}_2 + \frac{T}{2} \max\left\{\frac{1-p_1}{c_2} \cdot \frac{N}{T}, 1\right\} \right).$$

In particular, the seemingly quadratic functions in Fig. 4 are only piecewise quadratic on the three intervals  $0 \leq p_1 \leq \frac{c_1}{N/T} = 0.1$ ,  $0.1 \leq p_1 \leq 1 - \frac{c_2}{N/T} = 1 - 0.1c_2$ , and  $1 - 0.1c_2 \leq p_1 \leq 1$ . Again, the minimum of the average arrival time is taken when there is delay at both doors, i.e.,

$$\begin{aligned} t^{\text{avg}} &= p_1 \left( \text{len}_1 + \frac{T}{2} \frac{p_1 N}{c_1 T} \right) + (1-p_1) \left( \text{len}_2 + \frac{T}{2} \frac{1-p_1}{c_2} \frac{N}{T} \right) \\ &= \text{len}_2 - p_1(\text{len}_2 - \text{len}_1) + p_1^2 \frac{N}{2c_1} + (1-p_1)^2 \frac{N}{2c_2}, \end{aligned}$$

- 6 and setting  $dt^{\text{avg}}/dp_1 = 0$  to obtain the minimizer leads again to Eq. 2, i.e., the optimizers
- 7 for the maximum and average arrival time coincide. These results also agree very well
- 8 with those from the simulation.

### 3.3 Analysis for the discrete model

The following analysis shows that a discrete, group-based approach can match the behavior of the continuous model very closely. We consider the case  $c_1 = c_2 = 1$  (cf. left picture in Fig. 4).

Let again  $p_1 = \text{prob}(e_1)$ ,  $\text{len}_1 = 21$ ,  $\text{len}_2 = 41$ , and for a given value of  $p_1 \in [0, 1]$ , let  $t_k^{\text{arr}}(i)$  denote the arrival time at node 6 for that part of the  $i$ th group that takes the path via edge  $e_k$ ,  $k = 1, 2$ , and  $i = 1, \dots, n$  with  $n = 1000$ . Then, with similar arguments as in Sec. 3.2 for the delay at the doors,

$$t_1^{\text{arr}}(i) = \begin{cases} \frac{i-1}{100} + \text{len}_1 & \text{if } p_1 \leq 0.1 \\ \text{len}_1 + \frac{i-1}{10} p_1 & \text{if } p_1 \geq 0.1 \end{cases},$$

$$t_2^{\text{arr}}(i) = \begin{cases} \frac{i-1}{100} + \text{len}_2 & \text{if } p_1 \geq 0.9 \\ \text{len}_2 + \frac{i-1}{10} (1 - p_1) & \text{if } p_1 \leq 0.9 \end{cases}.$$

For any (sufficiently large) fixed number of groups,  $n$ , we can now evaluate the maximum arrival time  $t^{\text{max}}$  and the average arrival time  $t^{\text{avg}}$  at node 6. In the first case, we obtain  $t^{\text{max}} = \max\{t_1^{\text{arr}}(n), t_2^{\text{arr}}(n)\}$ . The minimum of  $t^{\text{max}} =: t^{\text{max}}(p_1)$  w.r.t.  $p_1$  is attained when  $t_1^{\text{arr}}(n) = t_2^{\text{arr}}(n)$ , i.e., when

$$\text{len}_1 + \frac{n-1}{10} p_1^* = \text{len}_2 + \frac{n-1}{10} (1 - p_1^*) \iff p_1^* = \frac{1}{2} + \frac{100}{n-1}.$$

For  $n = 1000$  this implies that the best possible distribution is obtained for  $p_1^* \approx 0.6001$ , achieving the smallest possible maximum arrival time of  $t^{\text{max}}(p_1^*) = 80.95$ .

Assuming again a (sufficiently large) fixed number of groups,  $n$ , and setting  $s_n = \sum_{i=1}^n \frac{i-1}{10} = \frac{n(n-1)}{20}$ , we can evaluate the average arrival time  $t^{\text{avg}} = t^{\text{avg}}(p_1)$  at node 6 for  $0.1 \leq p_1 \leq 0.9$  as

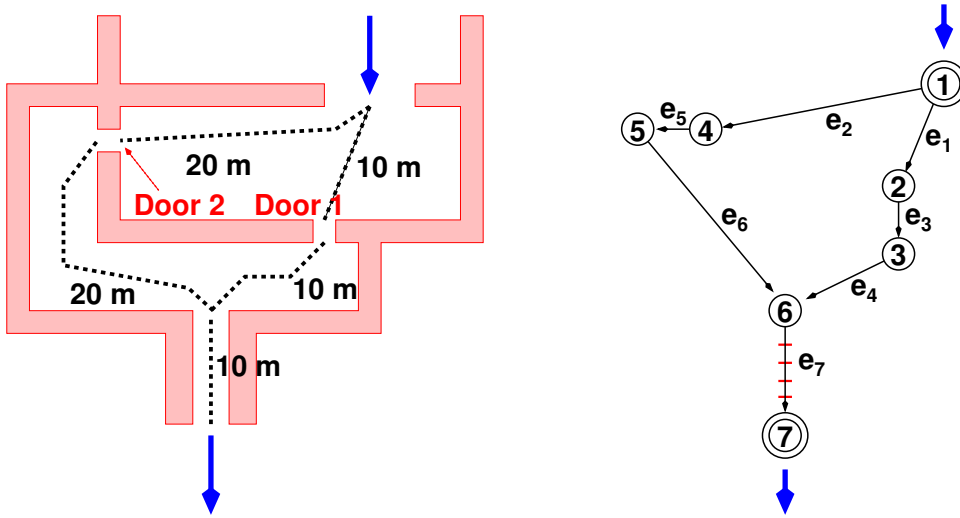
$$\begin{aligned} t^{\text{avg}}(p_1) &= \frac{1}{n} \left( p_1 \sum_{i=1}^n \left( \text{len}_1 + \frac{i-1}{10} p_1 \right) + (1 - p_1) \sum_{i=1}^n \left( \text{len}_2 + \frac{i-1}{10} (1 - p_1) \right) \right) \\ &= \frac{1}{n} (p_1 (\text{len}_1 n + p_1 s_n) + (1 - p_1) (\text{len}_2 n + (1 - p_1) s_n)) \\ &= \frac{1}{n} (2 s_n p_1^2 - (20n + 2 s_n) p_1 + \text{len}_2 n + s_n). \end{aligned}$$

Differentiating w.r.t.  $p_1$  yields

$$\frac{dt^{\text{avg}}(p_1)}{dp_1} = \frac{1}{n} (4 s_n p - 20n - 2 s_n) \stackrel{!}{=} 0 \iff p_1^* = \frac{1}{2} + \frac{5n}{s_n} = \frac{1}{2} + \frac{100}{n-1}.$$

Thus, for  $n = 1000$  we obtain  $p_1^* \approx 0.6001$  and  $t^{\text{avg}}(p_1^*) \approx 54.97$ .

Note that the calculations above are only meaningful if  $n > 200$ , i.e., if  $N > 20$ . Moreover, we can observe that the optimal distributions  $p_1^*$  for minimizing  $t^{\text{max}}$  and  $t^{\text{avg}}$  are equal for all reasonable values of  $n$ .



**Figure 7** Sketch of the more complex scenario (left) and corresponding network model (right).

## 4 A more complex scenario

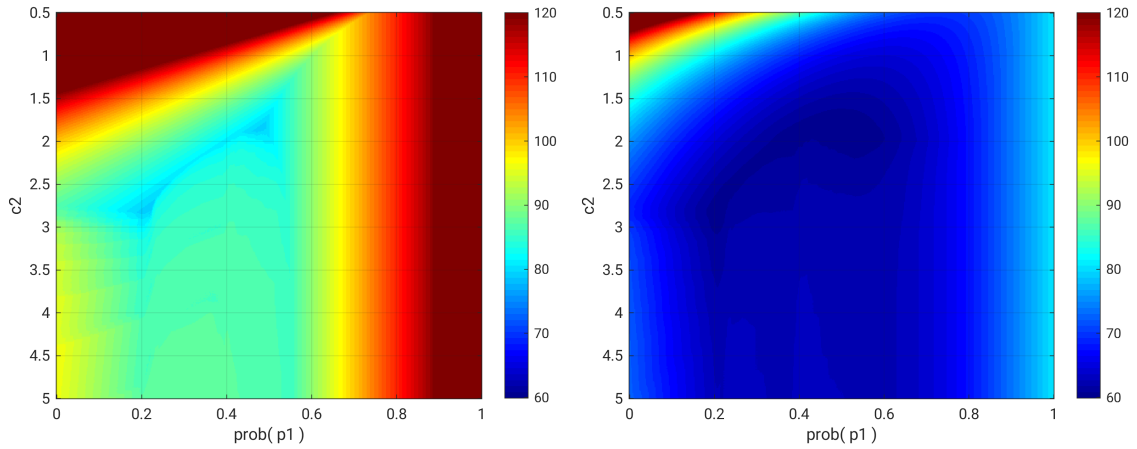
The situation changes considerably if, before leaving the scene, all persons have to pass another corridor, which is susceptible to congestion; cf. the sketch in Fig. 7.

The additional corridor is modelled by a new edge  $e_7$  of length 10 leading to the new exit node 7; cf. Fig. 7, and  $e_7$  is equipped with the velocity function  $f_3(1, 3, 5; \rho)$ , i.e., it allows movement with maximum velocity  $v = 1$  for densities up to 3, but for  $\rho = 5$  the velocity drops by one half. Thus, the number of persons leaving the corridor per time unit is decreasing for higher densities. To allow for a more localized behavior (the velocity of persons at one end of the edge needs not depend on the density at the opposite end), the edge is subdivided into five sub-edges of length 2, all sharing the above velocity function. These sub-edges will be referred to as  $e_{7A}$  (adjacent to node 6) to  $e_{7E}$  in the following.

The maximum and average arrival times for this scenario are shown in Fig. 8. The simulation indicates that—in contrast to Sec. 3—increasing the capacity of door 2 beyond a certain bound may lead to *higher* (maximum and average) arrival times. That is, even if the persons can reach node 6 earlier, this leads to a higher density in the final corridor, which in turn will slow down the movement there.

It is noteworthy that in this scenario, the approximate optimizers for the maximum arrival time ( $c_2 = 2.81$ ,  $p_1 = 0.218$ , with  $t^{\max} \approx 78.72$ ) and for the average arrival time ( $c_2 = 1.86$ ,  $p_1 = 0.470$ , with  $t^{\text{avg}} \approx 59.87$ ) are *different*. They correspond to the bottom left and top right, resp., blue regions in the left picture of Fig. 8. Choosing the “wrong” optimizer does, however, not too much harm in this case: At the max-optimizer, we have  $t^{\text{avg}} \approx 59.91$ , whereas  $t^{\max} \approx 79.33$  at the avg-optimizer.

More details of the flow can be seen in Fig. 9, which shows the density on selected edges over time for three different configurations from a vertical line through the max-optimizer, i.e.,  $p_1 = 0.218$ , with  $c_2$  being smaller (top left), equal to (top right), and larger



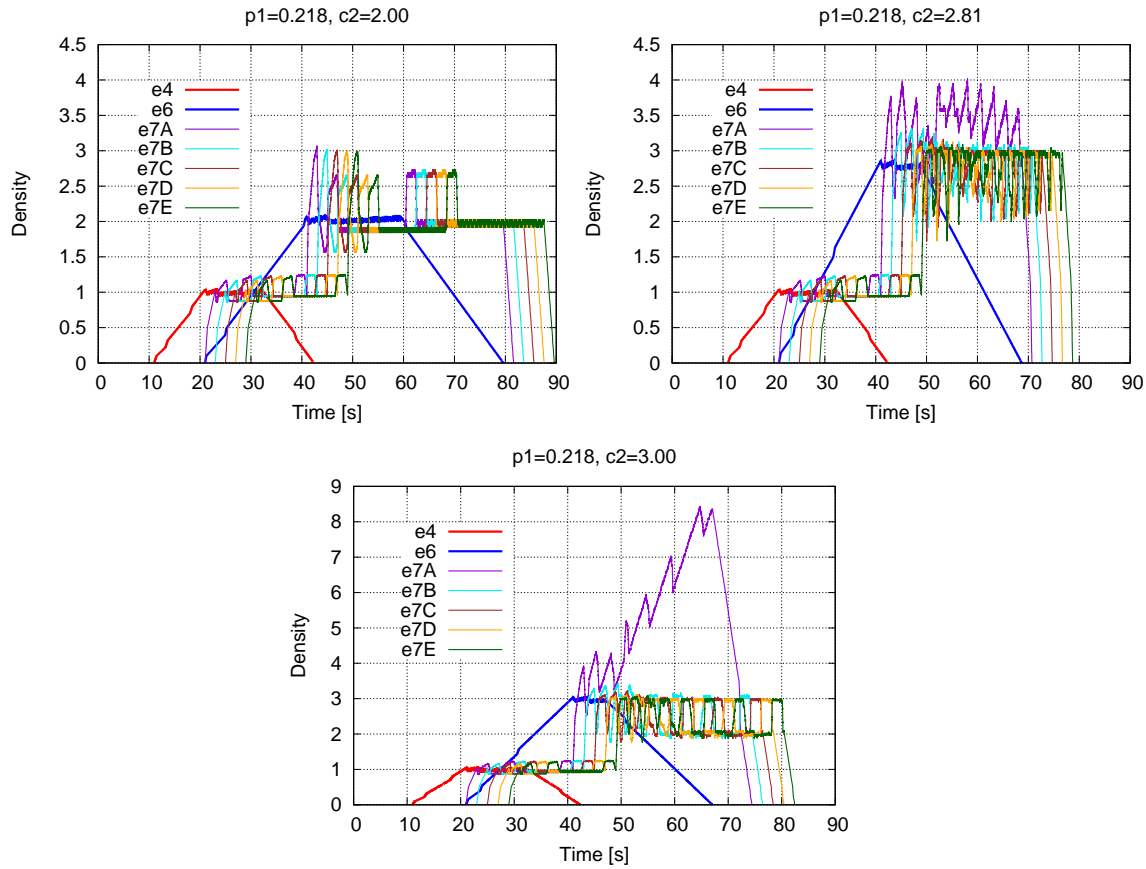
**Figure 8** Maximum (left) and average (right) arrival times for the more complex scenario depending on the capacity of door 2 and the distribution of the flow to edges  $e_1$  and  $e_2$ . The ranges (up to 250.59 for max, 150.47 for avg) have been cut to improve the display of smaller values.

1 than (bottom), resp., the optimal value  $c_2 = 2.81$ . In all three cases, the flow arrives at  
 2 edge  $e_4$  after  $\text{len}(e_1) + \text{len}(e_3) = 11$  seconds, and since a total of  $p_1 N = 21.8$  persons  
 3 come through door 1, it continues for 21.8 seconds, and the edge becomes empty after  
 4 another  $\text{len}(e_4) = 10$  seconds. A similar behavior can be observed for  $e_6$ , the specific  
 5 times depending on the respective capacity of door 2. On  $e_7$ , the different behavior shows  
 6 mainly at the beginning of the edge,  $e_{7A}$ . The other sub-edges feature a very similar  
 7 flow, with a delay of  $\text{len}(e_{7x}) = 2$  seconds from one sub-edge to the next. In the case  
 8  $c_2 = 3$  too much flow arrives at  $e_{7A}$ , leading to reduced velocity on this sub-edge. The  
 9 flow leaving the sub-edge is small enough such that the later sub-edges do not suffer from  
 10 the same problem.

## 11 5 Conclusions and future work

12 Routing decisions of users significantly influence the effectiveness of a pedestrian infra-  
 13 structure. However, the modelling of path selection is due to uncertainty and can even in  
 14 evacuation scenarios not be completely controlled. HyDEFS simulates pedestrian move-  
 15 ment with a macroscopic event-driven model with respect to varying routing decisions  
 16 and constraints. We consider in this article rather simple scenarios such that the simula-  
 17 tion results can be verified analytically. On the small network (in Section 3) the discrete  
 18 and the time-continuous calculation yield almost the same optimal solutions (minimizing  
 19  $t^{\text{avg}}$  and  $t^{\text{max}}$ , respectively) as the simulation with HyDEFS.

20 Interestingly, in the first scenario (Section 3) with  $c_1 = c_2 = 1$ , the optimal distributions  
 21 of flow (with respect to average  $t^{\text{avg}}$  and maximal arrival time  $t^{\text{max}}$ ) converge to  $p^* = \frac{1}{2}$ ,  
 22 when the number of groups  $n$  goes to infinity (with  $N = n/10$  and  $T = n/100$ ). This effect  
 23 can be observed analogously in the discrete and the continuous calculation, as well as in  
 24 the simulation. In the limit  $n \rightarrow \infty$  this effect relates to the transition of a time dynamic



**Figure 9** Density of the edges  $e_4$ ,  $e_6$  leading to node 6 and of the sub-edges  $e_{7A-E}$  leading from node 6 to node 7 for the optimal value  $p_1 = 0.218$  and different values of  $c_2$ :  $c_2 = 2.00$  (smaller than optimal, top left),  $c_2 = 2.81$  (optimal, top right),  $c_2 = 3.00$  (larger than optimal, bottom; note the different density range).

1 flow to a steady-state maximum flow problem, whose optimal solution is determined by  
 2 the capacities of the paths (in this case the doors) and is independent of the path lengths.

3 In the more complex scenario (Section 4) the optimal distribution of pedestrians with  
 4 respect to average and maximal arrival time do no longer coincide. In larger networks we  
 5 expect that these optimal solutions will differ significantly, which asks for a multiobjective  
 6 analysis of network designs. Additionally, other objective functions, like e.g., earliest  
 7 arrival flow [31] and other functional dependencies of velocity and density should be  
 8 evaluated on larger networks in future research using HyDEFS.

9 Compared to the analyses of the phase diagram of the network presented in [25, 26],  
 10 the approach introduced in this work represents a simplification. This is associated with  
 11 a lower computational effort but also with a less accurate representation of the dynamics  
 12 of the flows on the network. Whether and for which systems this simplification reflects  
 13 the essential dynamics has to be investigated in future work. In addition, it could be  
 14 investigated whether a coupling of models with different levels of detail allows to roughly

1 model the main parts of the network and to limit complex calculations with fine models  
2 to only a few edges and nodes of the network.

### 3 References

- 4 [1] Predtechenskii, V.M., Milinskii, A.I.: Planning for Foot Traffic Flow in Build-  
5 ings. Amerind Publishing, New Delhi (1978). Translation of: Proekttirovanie  
6 Zhdanii s Uchetom Organizatsii Dvizheniya Lyuddskikh Potokov, Stroizdat Pub-  
7 lishers, Moscow, 1969
- 8 [2] DiNunno, P.J.: SFPE Handbook of Fire Protection Engineering, 3 edn. National Fire  
9 Protection Association, Quincy MA (2002)
- 10 [3] Buchmueller, S., Weidmann, U.: Parameters of pedestrians, pedestrian traffic and  
11 walking facilities. Tech. Rep. Schriftenreihe 132, ETH, Eidgenössische Technische  
12 Hochschule Zürich (2007)
- 13 [4] Chraïbi, M., Tordeux, A., Schadschneider, A., Seyfried, A.: Modelling of Pedestrian  
14 and Evacuation Dynamics, pp. 1–22. Springer, Berlin, Heidelberg (2018)
- 15 [5] Dijkstra, E.W.: A note on two problems in connexion with graphs. *Numer. Math.*  
16 **1**(1), 269–271 (1959). doi:10.1007/BF01386390
- 17 [6] Kretz, T.: Pedestrian traffic: On the quickest path. *Journal of*  
18 *Statistical Mechanics: Theory and Experiment* **P03012** (2009).  
19 doi:10.1088/1742-5468/2009/03/P03012
- 20 [7] Kemloh Wagoum, A.U., Seyfried, A., Holl, S.: Modeling the dynamic route choice  
21 of pedestrians to assess the criticality of building evacuation. *Advances in Complex*  
22 *Systems* **15**(3) (2012). doi:DOI: 10.1142/S0219525912500294
- 23 [8] Kneidl, A.: Methoden zur Abbildung menschlichen Navigationsverhaltens bei  
24 der Modellierung von Fußgängerströmen. Dissertation, Technische Universität  
25 München (2013)
- 26 [9] Kielar, P.M., Biedermann, D.H., Kneidl, A., Borrmann, A.: A unified pedestrian  
27 routing model combining multiple graph-based navigation methods. In: Knoop,  
28 V.L., Daamen, W. (eds.) *Traffic and Granular Flow '15*, pp. 241–248. Springer Inter-  
29 national Publishing, Cham (2016). doi:10.1007/978-3-319-33482-0\_31
- 30 [10] Filippidis, L.: Representing the influence of signage on evacuation behavior within  
31 an evacuation model. *Journal of Fire Protection Engineering* **16**(1), 37–73 (2006).  
32 doi:10.1177/1042391506054298
- 33 [11] Nassar, K.: Sign visibility for pedestrians assessed with agent-based simulation.  
34 *Transportation Research Record: Journal of the Transportation Research Board*  
35 **2264**, 18–26 (2011). doi:10.3141/2264-03



- 1 [12] Kretz, T., Große, A., Hengst, S., Kautzsch, L., Pohlmann, A., Vortisch, P.: Quickest  
2 paths in simulations of pedestrians. *Advances in Complex Systems* **14**(5), 733–759  
3 (2011). doi:10.1142/S0219525911003281
- 4 [13] Andresen, E., Chraibi, M., Seyfried, A.: A representation of partial spatial knowl-  
5 edge: a cognitive map approach for evacuation simulations. *Transportmetrica A:*  
6 *Transport Science* (2018). doi:10.1080/23249935.2018.1432717
- 7 [14] Piccoli, B., Garavello, M.: *Traffic Flow on Networks*. American Institute of Mathe-  
8 matical Sciences, Springfield, MO (2006)
- 9 [15] Garavello, M., Han, K., Piccoli, B.: *Models for Vehicular Traffic on Networks*.  
10 American Institute of Mathematical Sciences, Springfield, MO (2016)
- 11 [16] Göttlich, S., Kühn, S., Ohst, J.P., Ruzika, S.: Evacuation dynamics influenced  
12 by spreading hazardous material. *Networks and Heterogeneous Media* **6**, 443  
13 (2011). doi:10.3934/nhm.2011.6.443. URL [http://aimsciences.](http://aimsciences.org//article/id/f3ef3e42-671e-41a6-9e9b-6ad0ee24441e)  
14 [org//article/id/f3ef3e42-671e-41a6-9e9b-6ad0ee24441e](http://aimsciences.org//article/id/f3ef3e42-671e-41a6-9e9b-6ad0ee24441e)
- 15 [17] Göttlich, S., Kühn, S., Ohst, J.P., Ruzika, S.: Evacuation modeling: a case study  
16 on linear and nonlinear network flow models. *EURO Journal on Computational*  
17 *Optimization* **4**(3), 219–239 (2016)
- 18 [18] Nishinari, K., Kirchner, A., Namazi, A., Schadschneider, A.: Extended floor field  
19 CA model for evacuation dynamics. *IEICE Trans. Inf. Syst.* **E87-D**(3), 726–732  
20 (2004)
- 21 [19] Kimms, A., Maassen, K.C.: A fast heuristic approach for large-scale cell-  
22 transmission-based evacuation route planning. *Networks* **60**(3), 179–193 (2012).  
23 doi:10.1002/net.21457
- 24 [20] Rausch, M., Treiber, M., Lämmer, S.: A microscopic decision model for route  
25 choice and event-driven revisions. arXiv e-print 1805.05076 (2018). URL [https:](https://arxiv.org/abs/1811.11295)  
26 [//arxiv.org/abs/1811.11295](https://arxiv.org/abs/1811.11295)
- 27 [21] Scellato, S., Fortuna, L., Frasca, M., Gómez-Gardeñes, J., Latora, V.: Traffic opti-  
28 mization in transport networks based on local routing. *Eur. Phys. J. B* **73**(2), 303–  
29 308 (2010). doi:10.1140/epjb/e2009-00438-2
- 30 [22] Sun, H.J., Wu, J.J., Gao, Z.Y.: Dynamics of routing mechanisms on  
31 traffic networks. *Int. J. Mod. Phys. C* **18**(11), 1775–1782 (2007).  
32 doi:10.1142/S012918310701173X
- 33 [23] Danila, B., Sun, Y., Bassler, K.E.: Collectively optimal routing for con-  
34 gested traffic limited by link capacity. *Phys. Rev. E* **80**(6), 066116 (2009).  
35 doi:10.1103/PhysRevE.80.066116

- 1 [24] Ezaki, T., Yanagisawa, D., Nishinari, K.: Pedestrian flow  
2 through multiple bottlenecks. *Phys. Rev. E* **86**, 026118 (2012).  
3 [doi:10.1103/PhysRevE.86.026118](https://doi.org/10.1103/PhysRevE.86.026118)
- 4 [25] Bittihn, S., Schadschneider, A.: Braess paradox in a network of to-  
5 tally asymmetric exclusion processes. *Phys. Rev. E* **94**, 062312 (2016).  
6 [doi:10.1103/PhysRevE.94.062312](https://doi.org/10.1103/PhysRevE.94.062312)
- 7 [26] Bittihn, S., Schadschneider, A.: Braess paradox in a network  
8 with stochastic dynamics and fixed strategies. *Physica A: Sta-*  
9 *tistical Mechanics and its Applications* **507**, 133 – 152 (2018).  
10 [doi:https://doi.org/10.1016/j.physa.2018.05.018](https://doi.org/10.1016/j.physa.2018.05.018)
- 11 [27] Selten, R., Chmura, T., Pitz, T., Kube, S., Schreckenberg, M.: Commuters  
12 route choice behaviour. *Games and Economic Behavior* **58**(2), 394–406  
13 (2007). [doi:https://doi.org/10.1016/j.geb.2006.03.012](https://doi.org/10.1016/j.geb.2006.03.012).  
14 URL <http://www.sciencedirect.com/science/article/pii/S089982560600039X>  
15
- 16 [28] Rapoport, A., Kugler, T., Dugar, S., Gisches, E.: Choice of routes in congested  
17 traffic networks: Experimental tests of the braess paradox. *Games and Economic*  
18 *Behavior* **65**(2), 538–571 (2009). [doi:10.1016/j.geb.2008.02.007](https://doi.org/10.1016/j.geb.2008.02.007)
- 19 [29] Braess, D.: Über ein Paradoxon aus der Verkehrsplanung. *Unternehmensforschung*  
20 **12**, 258–268 (1968)
- 21 [30] Braess, D., Nagurney, A., Wakolbinger, T.: On a paradox of traffic planning. *Trans-*  
22 *portation Science* **39**, 446–450 (2005)
- 23 [31] Baumann, N., Skutella, M.: Earliest arrival flows with multiple sources. *Mathemat-*  
24 *ics of Operations Research* **34**(2), 499–512 (2009). URL [http://www.jstor.](http://www.jstor.org/stable/40538395)  
25 [org/stable/40538395](http://www.jstor.org/stable/40538395)